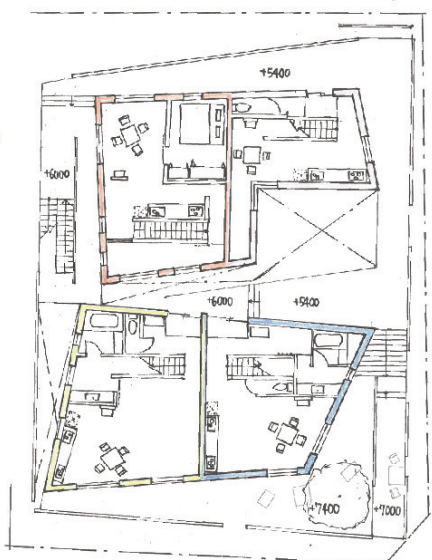
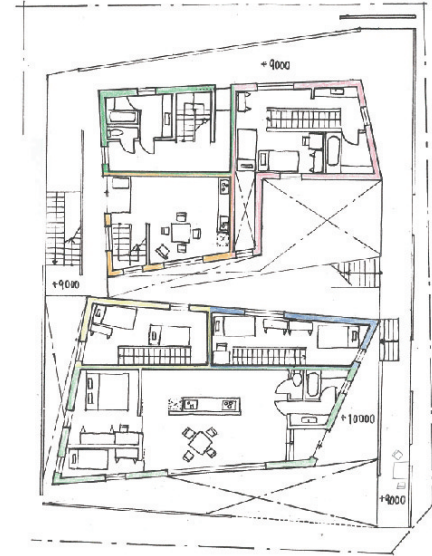
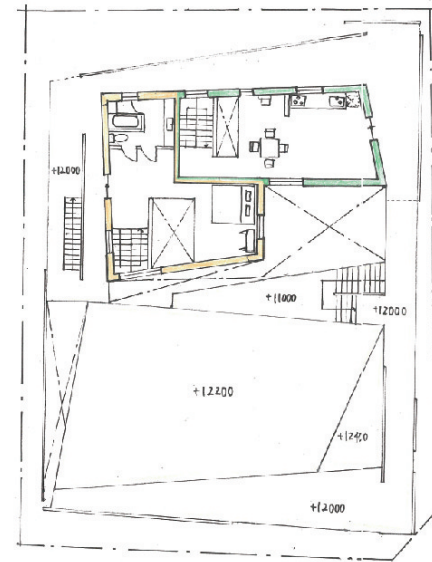


koko means here
 soko means there
 asoko means that place
 doko means anywhere

People live in "here"
 People can be "there"
 "There" overlaps and becomes "that place"
 It becomes one's place "anywhere"

kosoado apartment

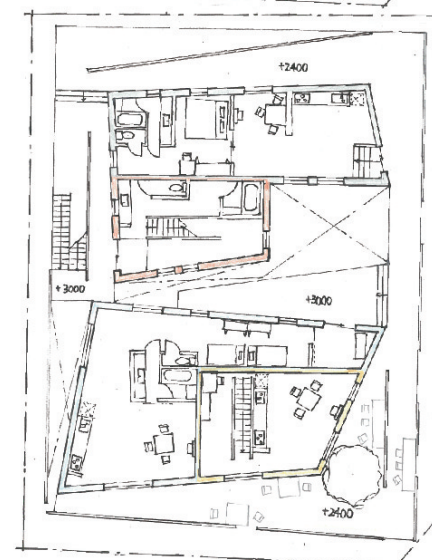
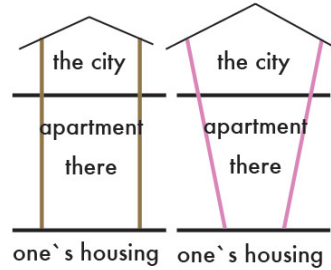


BIG live in SMALL housing

The advantage of people living in the housing complex
 is able to expanding one's place in the city.

one's housing | apartment | the city
 there

The wall is never thinks interrupting relations.
 It creates directionality to spread towards the city.



expanding "there"

"there" has level differences
 without one's housing
 to prevent it is only for one's.

one's housing | apartment | the city
 there

