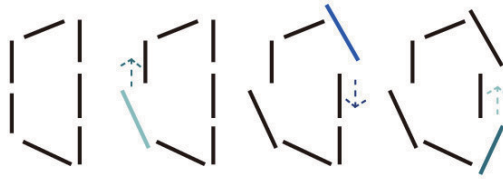


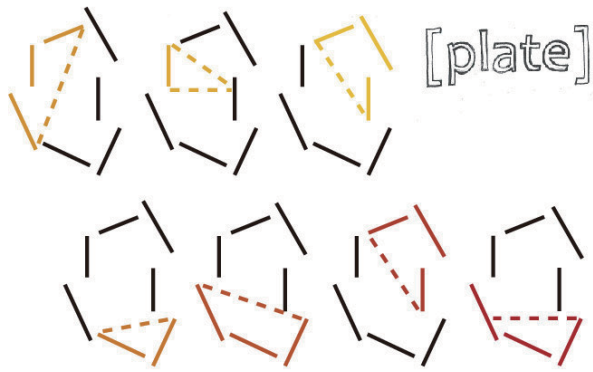
[home=plate]

[wall]



First, build "wall" with angle.
We get omission of sights.

"wall" is reference point for family.
The thought for reference points is different
each times and family members.



Each thought as a plate,
places like snuggle up the wall.

Some things of the family happen,
that are expressed difference of feelings by level differences.

[3types ±0]

You utilize interspaces
which are between plate and plate
associated with the wall.
These are spaces that can get circulation
and gather people.

[Living Entrance]

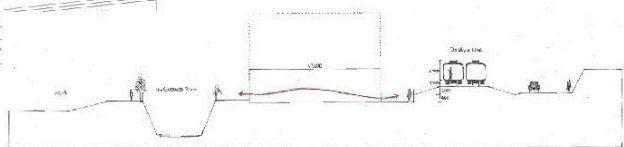
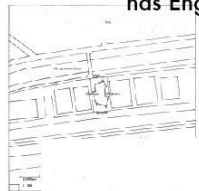
When you open doors made by glass,
it will be space has living Entrance as one.

[Park]

Here doesn't have any plates.
So this is not just void, completely outside in here.
You don't have stress from neighborhood.
If you look up, you can feel layer of plates.

[Open Entrance]

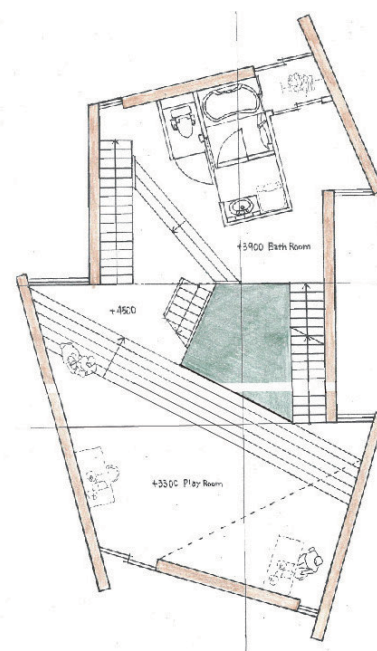
Entrance of south face to path has many people
has Engawa which can enhance conversation.



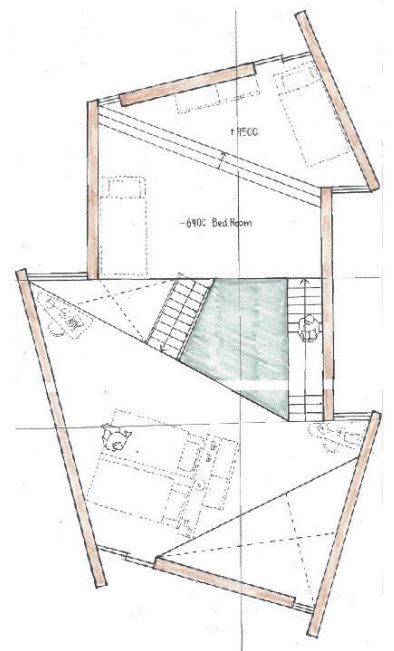
[site section]



[Level 1]



[Level 2]



[Level 3]

Odakyu Line

[section 1]

[section 2]

[section 3]

